



25 Ah Li-ion Polymer Battery 39381 Series



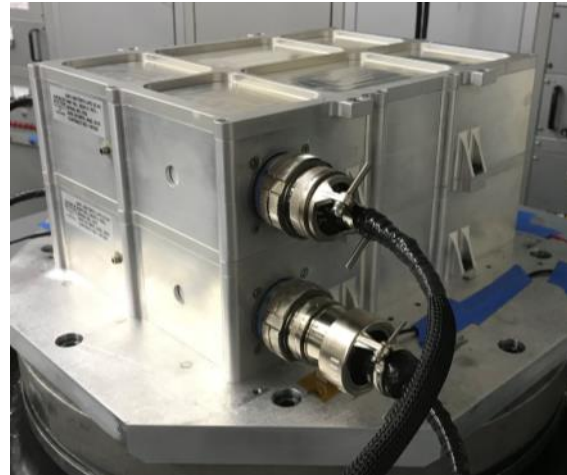
Space Vector fabricates a variety of rugged Li-Ion battery packs suitable for launch vehicles, missiles, spacecraft, UAVs and other applications encountering severe environmental conditions. Our high performance, lightweight 25 Ah Lithium Ion Polymer (Li-Po) secondary (rechargeable) battery is the perfect choice for powering avionics, telemetry, actuators, and ordnance systems.

Features

- High Continuous Discharge Rate of 125 A (5C)
- Rugged Aluminum Housing
- Stackable Configuration
- D38999 Connectors
- Tested to high dynamic environments

Available Configurations

-3 25 Ah with Heaters



Stacked During Vibration

Specifications

Weight:	19 lbs (8.6 kg) each
Dimensions:	12.5" x 9.9" x 3.12" (318 x 251 x 79 mm)
Mounting:	9.4" x 5.25", 4 Places, 10-32 Bolts
Capacity:	25 Ah max.
Energy:	590 Wh (1C) at 25°C min.
Voltage:	29.6 Vdc nominal (33.6 V to 21.6 V)
Charge Current:	12.5 A, C/2 standard (50 A max.)
Charge Temperature:	0°C to 45°C
Discharge	
Continuous:	Up to 125 Amps
Pulse:	Up to 200 Amps (≤ 10 seconds)
Discharge Temp.:	-20°C to +60°C
Random Vibration:	42.6 Grms (tested)
Sinusoidal Vibration:	41.1 g's 550-700 Hz (tested)

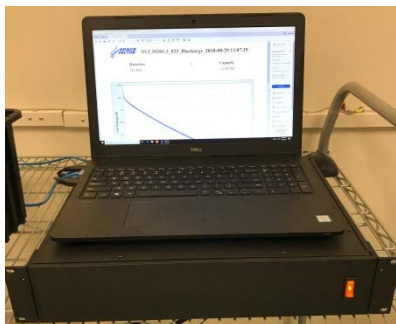
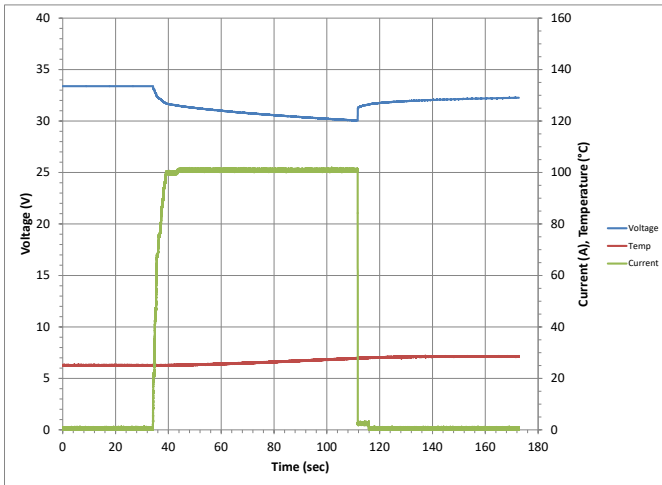
25 Ah Li-ion Polymer Battery 39381 Series



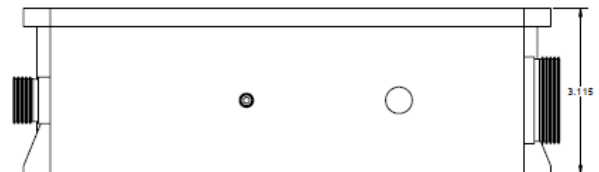
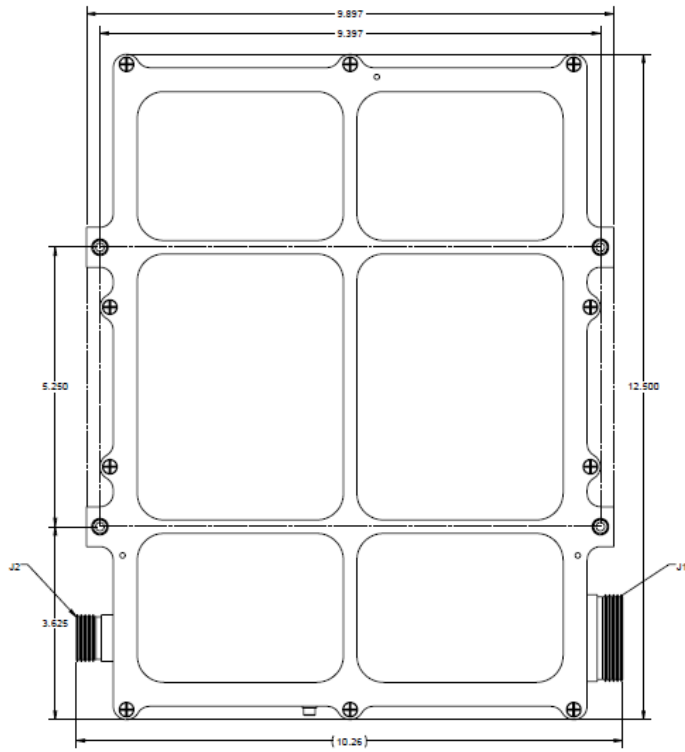
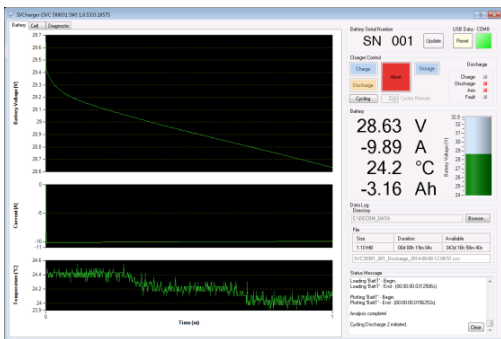
Batteries Compatible with Charger/Analyzer 500031 series

- Charge and discharge prior to flight
- External SVCharge™ Smart Battery Technology
 - Provides Programmable Protection and Monitoring
 - Cell Balancing during Charging
 - Battery Cycle History
 - Number of charge cycles, max/min cell voltage, current, temperature, and more
 - Standardized data interface provides instant health status and real time telemetry

100A 4C Discharge for 1 minute



Charger interfaces to Windows based PC Running SVCharge™ GUI



CONNECTOR J2	
D38999/20FC-35SN	NAME
1	CO
2	C1
3	C2
4	C3
5	C4
6	C5
7	C6
8	C7
9	C8
10	HEAT POWER
11	HEAT POWER +
12	PACK SENSE -
13	PACK SENSE +
14	CHS GND
15	CHS GND
16	RES ID 1
17	RES ID 2
18	RES ID COM
19	THERMISTOR -
20	THERMISTOR +
21	SPARE
22	SPARE

CONNECTOR J1	
D38999/20F1BSN-LC	NAME
A	PACK -
B	PACK -
C	PACK -
D	PACK +
E	PACK +
F	PACK +
G	PACK +
H	PACK -